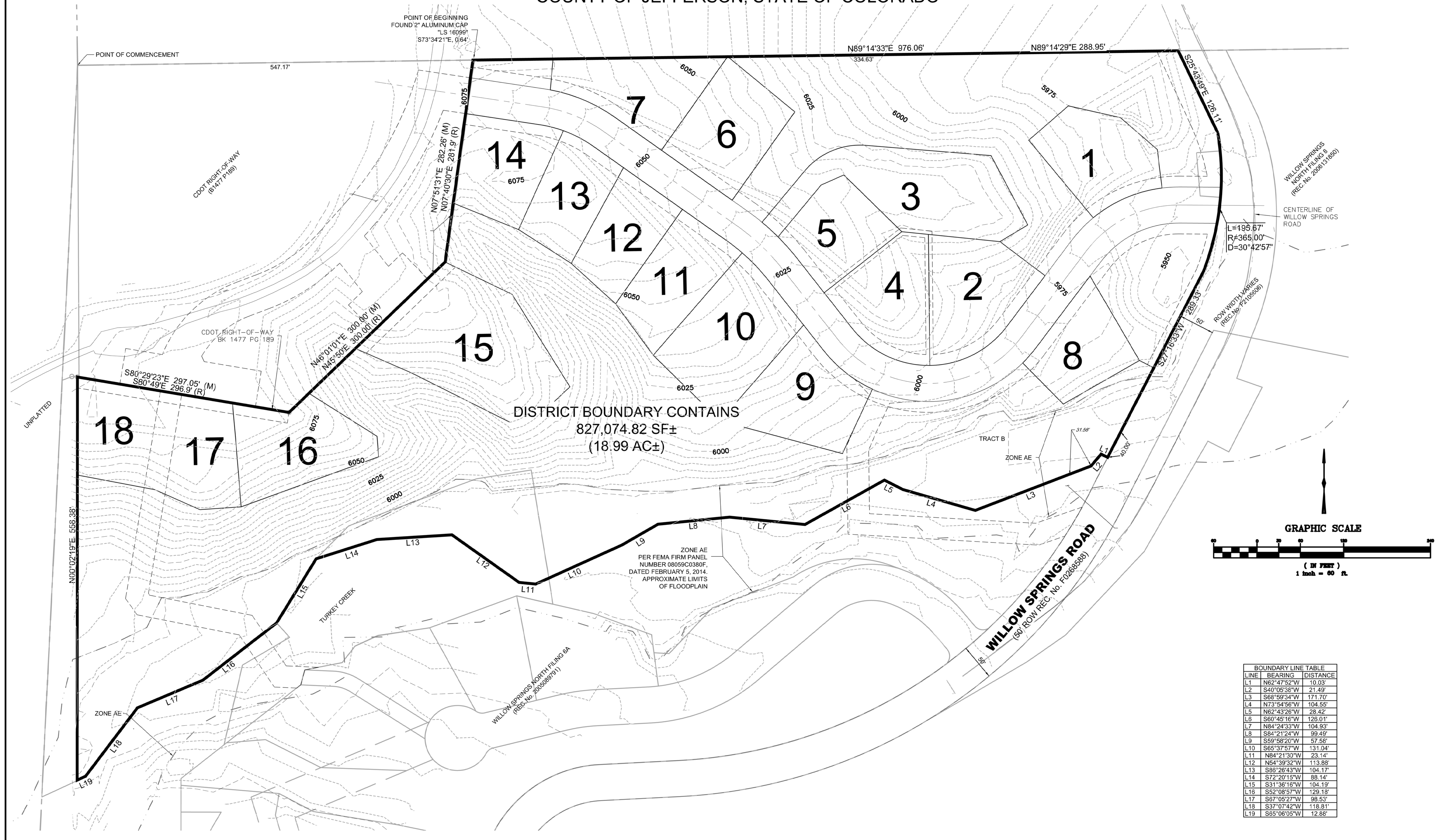


EXHIBIT B - DISTRICT BOUNDARY MAP

WILLOW SPRINGS NORTH FILING 11
 LOCATED IN THE NE 1/4 OF SECTION 14, TOWNSHIP 5 SOUTH,
 RANGE 70 WEST OF THE SIXTH PRINCIPAL MERIDIAN,
 COUNTY OF JEFFERSON, STATE OF COLORADO



DISTRICT BOUNDARY CONTAINS
 827,074.82 SF±
 (18.99 AC±)

ZONE AE
 PER FEMA FIRM PANEL
 NUMBER 08059C0380F,
 DATED FEBRUARY 5, 2014.
 APPROXIMATE LIMITS
 OF FLOODPLAIN

LINE	BEARING	DISTANCE
L1	N62°47'52"W	10.03'
L2	S40°05'38"W	21.49'
L3	S68°59'34"W	171.70'
L4	N73°54'56"W	104.55'
L5	N62°43'26"W	28.42'
L6	S60°45'16"W	123.01'
L7	N84°24'33"W	104.93'
L8	S84°21'24"W	99.49'
L9	S59°58'20"W	57.58'
L10	S65°37'57"W	131.04'
L11	N84°21'30"W	23.14'
L12	N54°39'32"W	113.88'
L13	S88°26'43"W	104.17'
L14	S72°20'15"W	88.14'
L15	S31°36'19"W	104.19'
L16	S52°08'57"W	129.18'
L17	S67°05'27"W	98.53'
L18	S37°07'42"W	118.81'
L19	S85°06'05"W	12.88'